

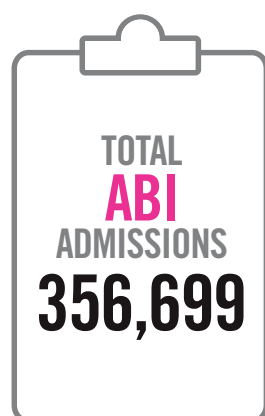
# ACQUIRED BRAIN INJURY



the brain injury association

2019-2020

STATISTICS BASED ON UK ADMISSIONS



**EVERY 90 SECONDS**  
someone in the UK is admitted  
to hospital with an **ABI**



**EVERY 3 MINUTES**  
someone in the UK is admitted  
to hospital with a **HEAD INJURY**



**EVERY 4 MINUTES**  
someone in the UK is admitted  
to hospital with a **STROKE**



**HEAD INJURIES  
UP 3%**

**STROKES  
UP 14%**

**ALL ABIs  
UP 12%**



SINCE 2005-6



**ADMISSIONS  
PER DAY**

**977** All ABIs

**433** Head injuries

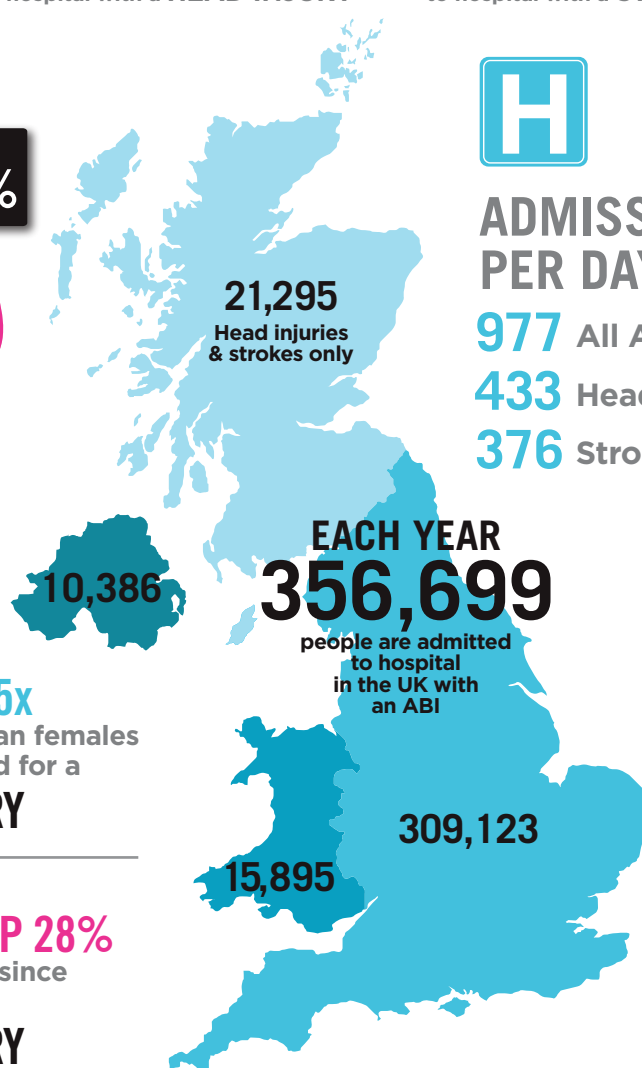
**376** Strokes



**MALES = 1.5x**  
more likely than females  
to be admitted for a  
**HEAD INJURY**



**FEMALES UP 28%**  
in admissions since  
2005-6 for a  
**HEAD INJURY**



Total ABI admissions include head injuries, strokes, brain tumours, and other conditions such as meningitis, encephalitis and hydrocephalus. Not all these people will be left with a long-term disability, so ABI is used as short-hand for 'ABI-related diagnosis'. Admissions do not equate to individuals as one person can have multiple admissions. Overall, individual patients make up approximately 85% of all admissions and over 90% of head injury admissions.

**For further information about brain injury or to access support:**

**Visit** [www.headway.org.uk](http://www.headway.org.uk) **Call** 0808 800 2244 **Email** [helpline@headway.org.uk](mailto:helpline@headway.org.uk)